

**CELEBRATING RAILROAD HISTORY,
PRESERVING FUTURE FOR ALL**

John E. Rimmasch, CEO

**Wasatch Railroad Contractors
Cheyenne, WY**

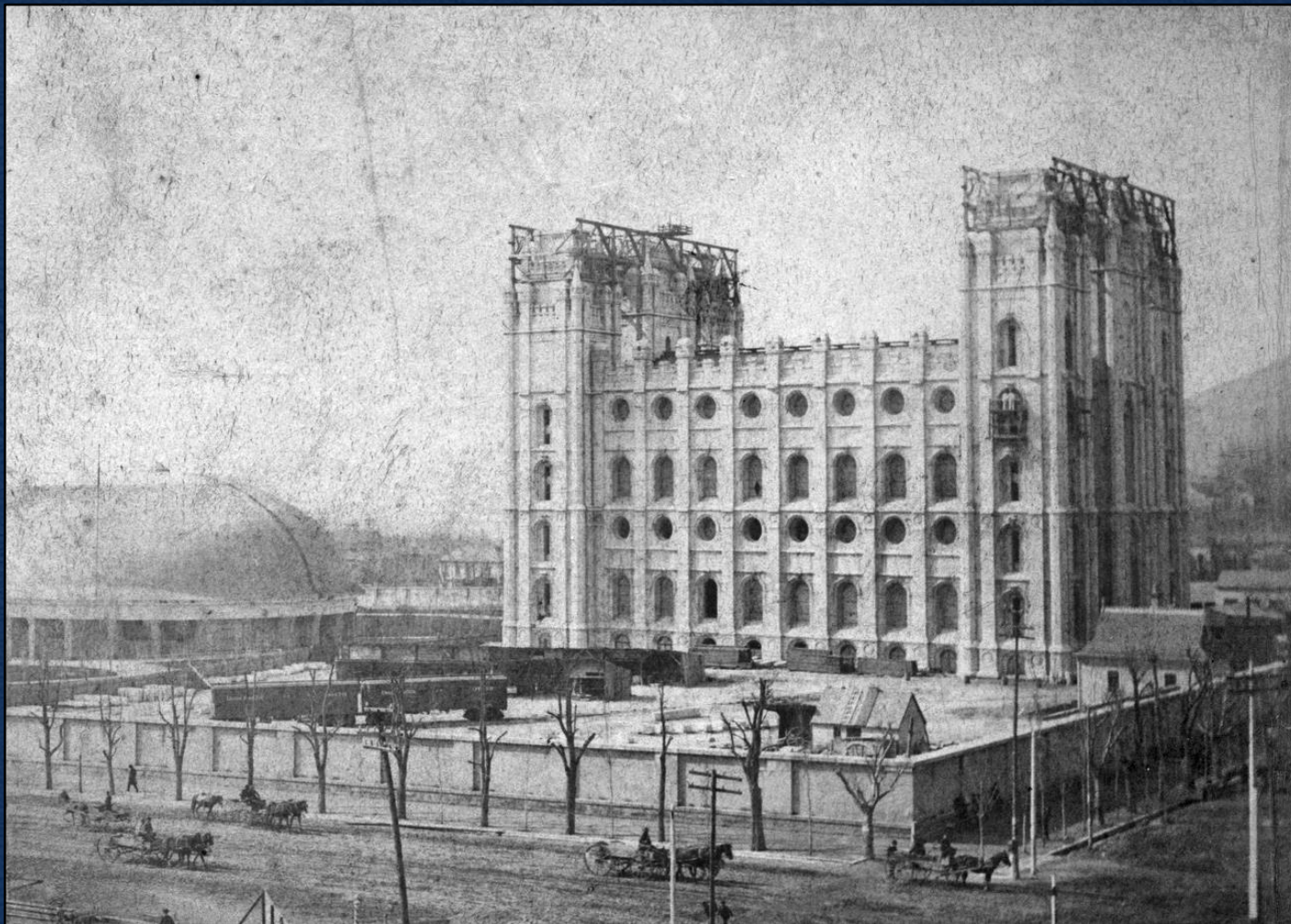


Courtesy, L. Tom Perry Special Collections, Harold B. Lee Library, Brigham Young University, Provo, UT 84602 - MSS P 24 Item 719









Charles R. Savage photographs, circa 1866-1906; SALT LAKE TEMPLE BLOCK; Salt Lake Temple, circa 1890-1892; Temple Block, Salt Lake; Church History Library, <https://catalog.lds.org/assets/7e7c0eed-9265-45b5-8c50-c9edac4ced10/0/1#> (accessed: April 18, 2019)



Charles R. Savage photographs, circa 1866-1906; SALT LAKE CITY, UTAH; Main Street, undated; East Side East Temple St. [Main Street] Salt Lake City; Church History Library, <https://catalog.lds.org/assets/b8016990-5e65-4607-8ebc-4c804497574b/0/1> (accessed: April 18, 2019)

Thank You!